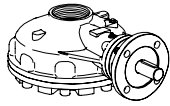
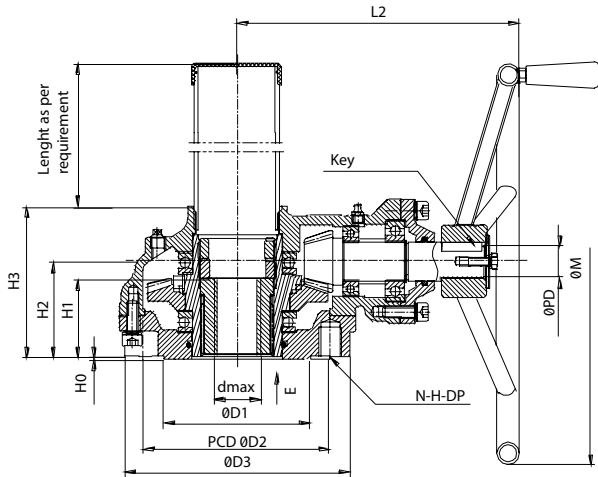




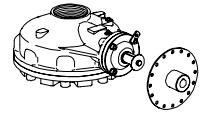
B Series Bevel Gear Boxes



Type A - Single Stage Gearboxes

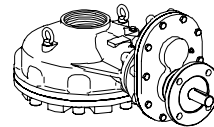
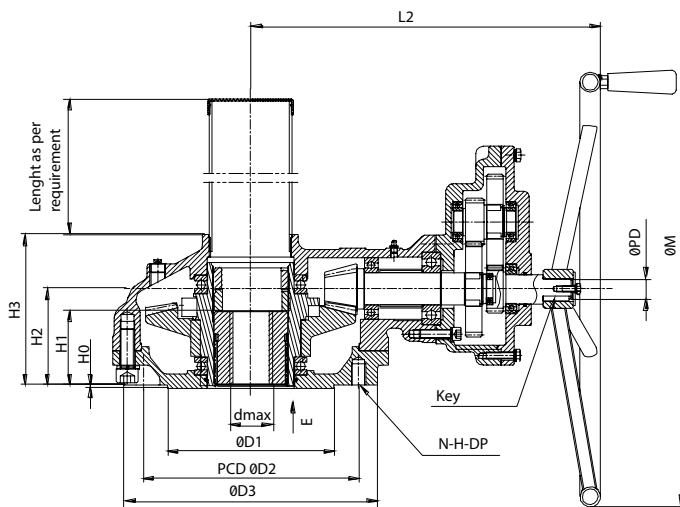


With Motor Flange
Flange Follow ISO5210

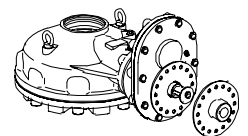


With Locking Device

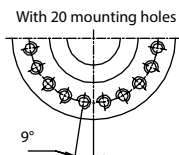
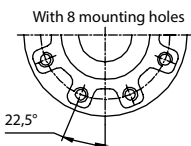
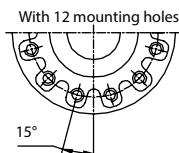
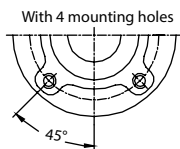
Type B - Dual Stage Gearboxes



With Motor Flange
Flange Follow ISO5210



Side



Technical Data & Dimensions (mm)

Type	Model	Technical Parameters									Base Part					External Part					Handwheel	
		Standard Flange acc. ISO5211	Optional Mounting acc. ISO5211	Ratio	Input Nm	Rating Output Nm	M.A. ±10°	Max. Bore dia. mm	Max Thrust KN	Weight Kg	D1	P.C.D.		D3	H0	H1	H2	H3	L2	PD	Key	M
												D2	N-H-DP									
A	B10-0010	F10	-	2.5:1	105	220	2,1	22	75	9	70	102	4-M10-15	125	2	47	70	104	186	26	8	300
	B20-0010	F12	F10	3:1	140	350	2,5	28	113	12	85	125	4-M12-18	150	3	49	70	113	195	26	8	300
	B30-0010	F14	F12	3:1	220	550	2,5	36	127	18	100	140	4-M16-24	175	3	58	78	124	230	28	8	400
	B35-0010	F16	F14	3.6:1	290	900	3,1	42	141	23	130	165	4-M20-30	210	3	69	85	133	247	28	8	450
	B40-0010	F20	F14-F16-F25	4.1:1	345	1200	3,5	50	190	34	140	205	8-M16-24	250	4	69	87	145	276	32	10	500
	B50-0010	F25	F16-F20	4.5:1	475	1800	3,8	60	268	45	200	254	8-M16-24	300	4	82	95	159	311	32	10	600
	B60-0010	F30	F25	5.2:1	640	2800	4,4	70	308	83	230	298	8-M20-30	350	4	103	133	208	381	32	10	650
	B70-0010	F35	F25-F30	5.7:1	730	3500	4,8	80	402	143	260	356	8-M30-45	415	5	146	149	246	437	38	10	700
	B80-0010	F35	F25-F30	6.3:1	1300	7000	5,4	95	512	190	260	356	8-M30-45	415	5	159	172	276	444	38	10	700
	B90-0010	F40	F30-F35	6.3:1	2250	12000	5,4	110	1110	277	300	40	8-M36-54	475	5	174	209	348	461	50	16	800
B	B20-0020	F20	F14-F16-F25	13.3:1	150	1400	9,6	50	190	55	140	205	8-M16-24	250	4	69	87	145	375	28	8	450
				18.3:1	110		13,3															
	B30-0020	F25	F16-F20	19.9:1	175	2500	14,3	60	268	70	200	254	8-M16-24	300	4	82	95	159	403	28	8	500
				27:1	155		16,5															
	B35-0020	F30	F25	23:1	245	4000	16,5	70	308	107	230	298	8-M20-30	350	4	103	133	208	489	28	8	600
				31.3:1	180		22,5															
	B40-0020	F35	F25-F30	38.5:1	180	5000	28	80	402	186	260	356	8-M30-45	415	5	146	149	246	563	38	10	650
				51.3:1	135		37															
	B50-0020	F35	F25-F30	42.8:1	295	9000	31	95	512	230	260	356	8-M30-45	415	5	159	172	276	570	38	10	700
				56.7:1	220		41															
B60-0020	F40	F30-F35	42.8:1	490	15000	31	110	1110	320	300	406	8-M36-54	475	5	174	209	348	593	38	10	700	
			56.7:1	370		41																
B70-0020	F48	F40	94.4:1	295	20000	68	120	1310	460	370	483	12-M36-54	560	6	196	219	346	646	45	14	800	
B80-0020	F60	F48	112:1	375	30000	81	140	2140	690	470	603	20-M36-54	700	6	217	237	382	687	45	14	800	
B90-0020	F60	-	143.5:1	485	50000	103	180	4000	1150	470	603	20-M36-54	805	6	242	260	445	831	45	14	1000	